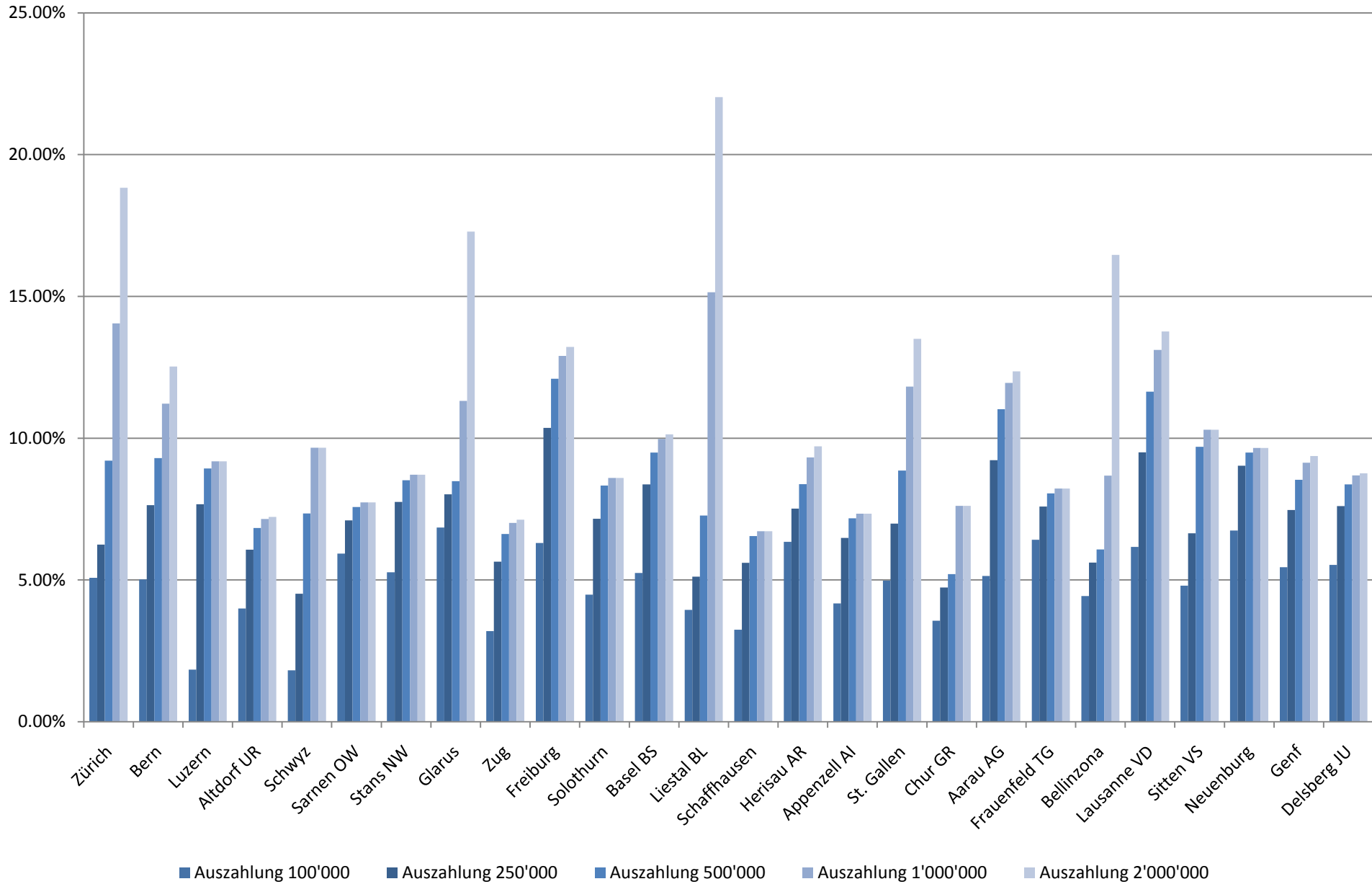


## Kapitalauszahlung 2. Säule + Säule 3a: Steuerbelastung



Kapitalauszahlung 2. Säule + Säule 3a: Steuerbelastung

Wohnsitz	Auszahlung 100'000		Auszahlung 250'000		Auszahlung 500'000		Auszahlung 1'000'000		Auszahlung 2'000'000	
Zürich	5'077	5.08%	15'623	6.25%	46'031	9.21%	140'477	14.05%	376'607	18.83%
Bern	5'023	5.02%	19'097	7.64%	46'499	9.30%	112'178	11.22%	250'568	12.53%
Luzern	1'835	1.84%	19'180	7.67%	44'639	8.93%	91'834	9.18%	183'666	9.18%
Altdorf UR	3'996	4.00%	15'173	6.07%	34'174	6.83%	71'499	7.15%	144'500	7.23%
Schwyz	1'812	1.81%	11'294	4.52%	36'739	7.35%	96'600	9.66%	193'200	9.66%
Sarnen OW	5'933	5.93%	17'763	7.11%	37'853	7.57%	77'360	7.74%	154'720	7.74%
Stans NW	5'270	5.27%	19'384	7.75%	42'595	8.52%	87'080	8.71%	174'160	8.71%
Glarus	6'847	6.85%	20'048	8.02%	42'423	8.48%	113'170	11.32%	345'720	17.29%
Zug	3'195	3.20%	14'107	5.64%	33'102	6.62%	70'149	7.01%	142'589	7.13%
Freiburg	6'303	6.30%	25'900	10.36%	60'495	12.10%	129'012	12.90%	264'392	13.22%
Solothurn	4'479	4.48%	17'889	7.16%	41'639	8.33%	86'001	8.60%	172'000	8.60%
Basel BS	5'248	5.25%	20'924	8.37%	47'454	9.49%	99'751	9.98%	202'751	10.14%
Liestal BL	3'947	3.95%	12'798	5.12%	36'353	7.27%	151'426	15.14%	440'562	22.03%
Schaffhausen	3'246	3.25%	14'017	5.61%	32'748	6.55%	67'152	6.72%	134'306	6.72%
Herisau AR	6'347	6.35%	18'799	7.52%	41'873	8.37%	93'200	9.32%	194'200	9.71%
Appenzell AI	4'177	4.18%	16'206	6.48%	35'873	7.17%	73'400	7.34%	146'800	7.34%
St. Gallen	4'977	4.98%	17'474	6.99%	44'273	8.85%	118'200	11.82%	270'000	13.50%
Chur GR	3'565	3.57%	11'842	4.74%	26'011	5.20%	76'170	7.62%	152'340	7.62%
Aarau AG	5'145	5.15%	23'061	9.22%	55'101	11.02%	119'504	11.95%	247'144	12.36%
Frauenfeld TG	6'417	6.42%	18'973	7.59%	40'273	8.05%	82'200	8.22%	164'400	8.22%
Bellinzona	4'437	4.44%	14'023	5.61%	30'373	6.07%	86'799	8.68%	329'237	16.46%
Lausanne VD	6'167	6.17%	23'746	9.50%	58'203	11.64%	131'111	13.11%	275'271	13.76%
Sitten VS	4'797	4.80%	16'618	6.65%	48'482	9.70%	103'000	10.30%	206'000	10.30%
Neuenburg	6'740	6.74%	22'570	9.03%	47'468	9.49%	96'588	9.66%	193'175	9.66%
Genf	5'449	5.45%	18'675	7.47%	42'674	8.53%	91'316	9.13%	187'377	9.37%
Delsberg JU	5'528	5.53%	19'015	7.61%	41'864	8.37%	86'892	8.69%	175'293	8.76%